



VAS CORPORATION

DELTA ROBOT

FEATURES

FAST, PRECISE AND RELIABLE

A parallel robot utilizing a parallel linkage mechanism to perform extremely high speed motions with stability, high accuracy and a short cycle time.

- High-speed operation - speeds up to 100 cycles per minutes (CPM) with full 8 kg payload and up to 125 CPM with 1 kg payload.
- High accuracy ± 0.1 mm repeatability.
- Rotary-axis simplifies design and improves reliability of operations.

EASE OF USE AND FLEXIBILITY

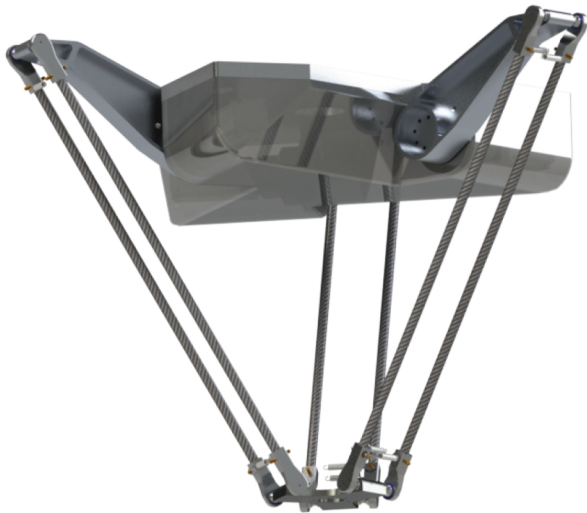
- Easy installation and maintenance
- Available with conveyor tracking application

APPLICABLE TO WIDE SPECTRUM OF INDUSTRIES

Ideal for using in many industrial applications including:

- Pick and place
- Assembly
- Alignment
- Packaging

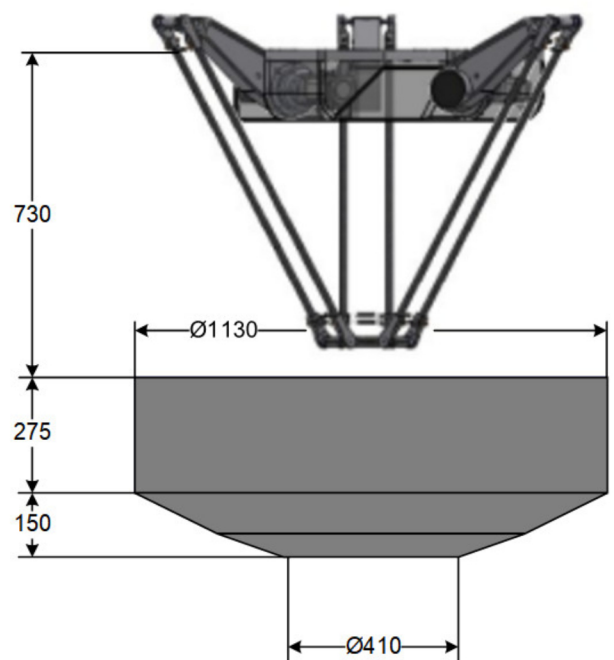
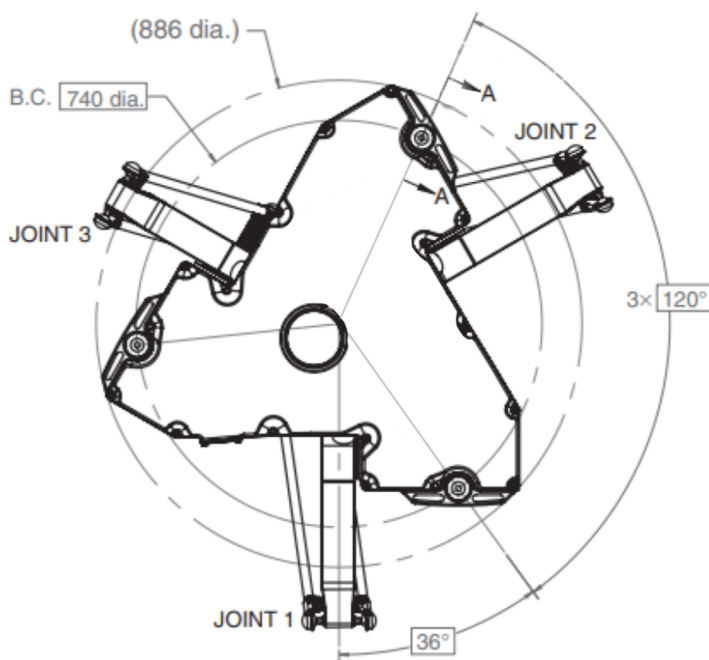
ROBOT SPECIFICATIONS



Specifications

Structure	Parallel Arm
Mounting	Ceiling
Controlled Axes	3 + 1 (optional rotary axis)
Payload	8 Kg
Repeatability	±0.1 mm
Range of Motion	1130 mm x 425 mm
Weight	54 Kg
Brakes	All axes
Power Requirement	Single-phase 220 VAC; 50Hz

Footprint



VAS CORPORATION

A leading manufacturer of Robot and Motion Control System technologies

192 Nguyen Thi Dinh street, Binh Trung Tay ward,
Thu Duc city, Ho Chi Minh City, Vietnam

vascorporation.com

admin@vascorporation.com

+84-989898867